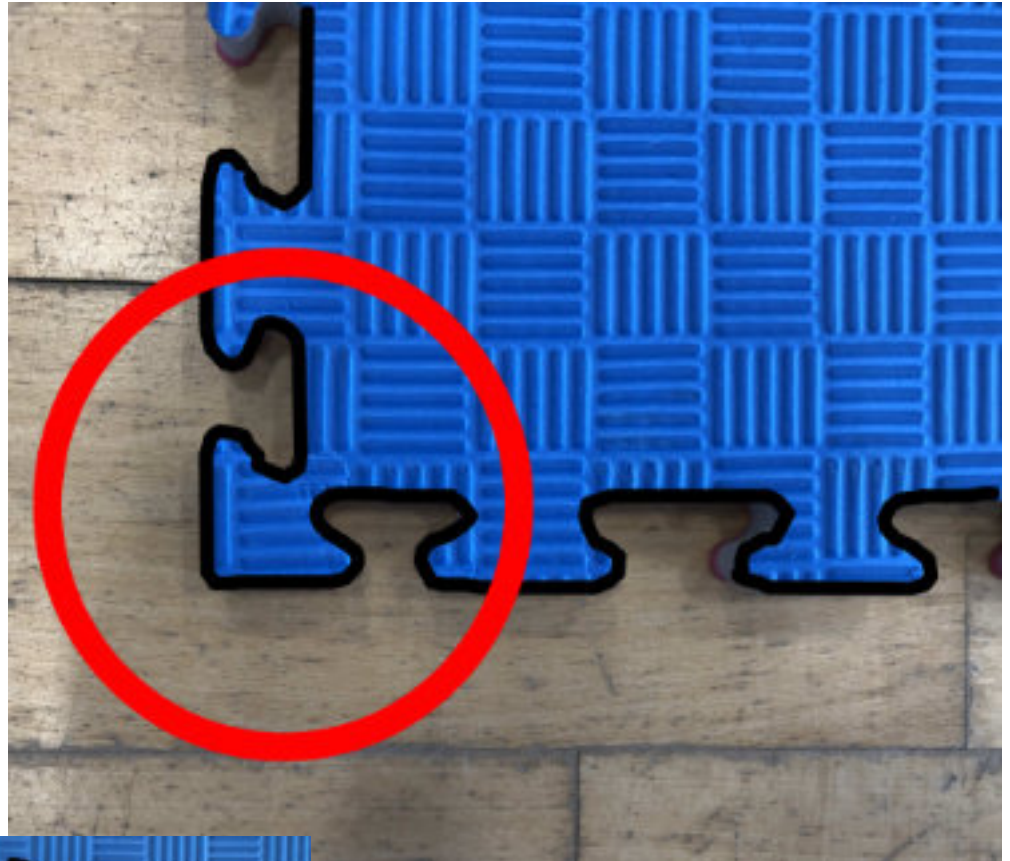


Laying jigsaw mats

3 of the 4 corners are identical. The fourth corner is like a club on a playing card / or arrow head - all mats should have the club orientated in the same position when joining the mats. For example bottom left shown below



Separating the mats to store them avoid tearing them apart. Try to lift vertically - out of the interlocking lugs - easy with two of you at the same time.

When joining the mats try to fit together by lining the lugs above their holes and dropping the mat in vertically.

HINTS

Grow the mat area by adding a single mat on to the main area one at the time.

Two people can fit a single mat onto the main area faster than one - as they are able to line the lugs up with the interlocking holes better.